

SECOND CIRCULAR

Following the 1st congress in Lisbon (Portugal) in 2013, and additional congresses organized in Graz (Austria) in 2017 and Milan (Italy) in 2019, the 4th International Congress on Stratigraphy (STRATI 2023) will be held in Lille, France, 11th-13th July 2023!

AGENDA

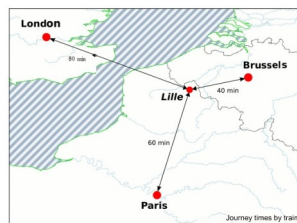
The congress will be held with keynote talks and regular lectures (all scheduled online) will take place in the new Centre of Excellence for the Earth Sciences (CEES) on the campus of the Cité Scientifique (Science Campus) at Villeneuve d'Ascq (15 minutes by metro from Lille city centre). The congress is scheduled for Wednesday, 11th to Thursday, 13th 2023. Plenary and parallel sessions will take place, with numerous workshops and business meetings in smaller rooms available to all subcommittees of the ICSS.

LOCATION

Lille, capital of the French Flanders, is located in the northernmost part of France. It is convenient to travel to one of the major international airports in Paris (France), Brussels (Belgium), or London (UK). High speed train connections are regular and direct, with very short travel times to Lille. Hotels and restaurants are available in all price categories, mostly in walking distance from the metro and train stations.



Palais des Beaux Arts



80 minutes to London
60 minutes to Paris
40 minutes to Brussels



Lille Place Général de Gaulle

Congress website: <http://www.strati2023.com>

=====

LANGUAGE

English will be the official language of the meeting and the field trip(s)

SCIENTIFIC SESSIONS

General scientific themes will be mostly organized as plenary sessions, but parallel sessions will also be scheduled, as well as poster sessions. The following scientific sessions have been proposed covering a wide range of stratigraphic topics. For more detailed information, visit the congress website: <https://www.elsevier.com/locate/iscg2023>

Scientific Sessions

SC1: Tertiary-Cenozoic

SC2: The Anthropocene: A Geological Perspective

SC3: Deep Time in the Quaternary

SC4: Neogene Climate Change

SC5: African Paleogeography

SC7: Late Cretaceous to Paleogene

SC8: Cretaceous Paleogeography and Paleoclimatology

SC9: The Jurassic-Eocene

SC10: Cretaceous to Paleogene: A Geological Perspective

SC11: Stratigraphy of the Caribbean

SC12: Deep Time in the Quaternary

SC13: Neogene Climate Change

SC14: Oceanic Crustal Evolution

6LENARC LECTURES

The (program + o, the (lenarc# lectures will be available on the congress website in ! a# 2023!
The following *e#notes are scheduled<

Laia Ale&ret (Daragoza, ' (ain)< Global e. ents o, the Paleogene
Lucia An&i\$lini (! ilano, "tal#)< &arboni,erouscPer+ian en. iron+ents and cli+ate
Ste(en D\$llan# (Athens, GA, 5' A)<' trat gra(hic (alaeobiolog#
>ichael J\$achi2%?i (>rlangen, Ger+an#)< &he+ostrat gra(h#
JacBue% La%?ar (Paris, France)< Astrono+# and strat gra(h#
Chri%t\$, her Sc\$te%e (>. anston, "L, 5' A)< Phanerozoic geogra(h# and cli+ate

6 ORFSDO6S AND OROU6 >EETINOS

Two wor*sho(s are scheduled, and (art ci(a+on is ,ree, but registra+on is +andator# ,or
those who want (art ci(a+ng (s(ace li+ited)!

E S1<OneStra/&ra, h Data1a%e an# C\$n%traine# O, /2iGa/\$n @CONO6A anal %i%

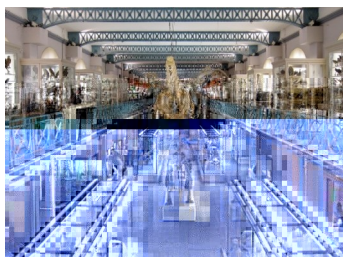
E S2<Ra#i%-i%t\$, ic #a/n&

Group(+eetngs are (ossible, with s+aller roo+s available ,or all "&' subco+ +issions (and
other grou(s) that wish to organize their o?cial business +eetngs! Please, contact the
organizers to boo* a roo+!

SOCIAL ACTI"ITIES AND CONFERENCE DINNER

S\$cial ac/(i/e% include the ice1rea?er , art and rece(ton on ! onda# 2ul# 10th, as well as a
.isit to the Natural Di%t\$r >u%eu2 Lille!

The c\$n'erece #inner will be organized on ; ednesda#, 2ul# 12th, at the 7er+itage Gantois,
an ancient hos(ice (a ,or+er charitable al+shouse) o, the late 1th &entur#, located in the
cit# centre o, Lille, in wal*ing distance ,ro+ the railwa# staton! The rece(ton and dinner will
ta*e (lace in the E' alle des 7os(icesF the historical +ain caring roo+!



Musée d'Histoire Naturelle



Salle des Hospices



Hospice Gantois

&ongress ; ebsite< h+, %-..%tra/2023!%cience%c\$n'!\$r&

=====

EHCURSIONS

1. **Field Excursion, Jura, France** | 10th July, 2023
This excursion is scheduled to take place before and after the indoor meeting.

Excursion 1
Wednesday 10th to Thursday 11th July 2023
This excursion covers the Jura region, including the Jura mountains, the Jura Biosphere Reserve, and the Jura wine region. The excursion will visit the Jura Biosphere Reserve, the Jura wine region, and the Jura mountains.

Excursion 2
Thursday 11th to Friday 12th July 2023
This excursion covers the Jura region, including the Jura mountains, the Jura wine region, and the Jura Biosphere Reserve. The excursion will visit the Jura Biosphere Reserve, the Jura wine region, and the Jura mountains.

Excursion 3
Friday 12th to Saturday 13th July 2023
This excursion covers the Jura region, including the Jura mountains, the Jura wine region, and the Jura Biosphere Reserve. The excursion will visit the Jura Biosphere Reserve, the Jura wine region, and the Jura mountains.

Excursion 4
Saturday 13th to Sunday 14th July 2023
This excursion covers the Jura region, including the Jura mountains, the Jura wine region, and the Jura Biosphere Reserve. The excursion will visit the Jura Biosphere Reserve, the Jura wine region, and the Jura mountains.

Excursion 5
Sunday 14th to Monday 15th July 2023
This excursion covers the Jura region, including the Jura mountains, the Jura wine region, and the Jura Biosphere Reserve. The excursion will visit the Jura Biosphere Reserve, the Jura wine region, and the Jura mountains.

Excursion 6
Monday 15th to Tuesday 16th July 2023
This excursion covers the Jura region, including the Jura mountains, the Jura wine region, and the Jura Biosphere Reserve. The excursion will visit the Jura Biosphere Reserve, the Jura wine region, and the Jura mountains.



Cretaceous cliffs of the Jura Biosphere Reserve, Côte d'Opale



Aeolian tuff section of Gilette, Jura

Congress website: <https://www.tra/2023/science>

=====

TRAVEL GRANTS

Travel Grants are available for students, and for participants from developing countries. These are administered by the *International Commission of Stratigraphy*, the *International Association of Sedimentologists*, and the Congress Organizers. Please, check the conference website for further information and conditions to apply.

ORGANIZATION

Co-Chair

General Chair

Thomas A. van der Zand, Lille, France (chair)
Catherine Sniezko, Lille, France (vice chair)

Scientific Co-Chair

Laia Alegret, Zaragoza, Spain (Chair Paleogene Subcommission)
Lucia Angiolini, Milano, Italy (Chair Permian Subcommission)
Thomas Aretz, Toulouse, France (Chair Stratigraphic Section, *Société Géologique de France*)
Annelise Auerbach, Liège, Belgium (Secretary Subcommission Inter-calibration)
Bertrand Lecomte, Liège, France (Secretary Ordovician Subcommission)
Christina A. Ullrich, Liège, France (Secretary Jurassic Subcommission)
Bernard Bouteiller, Brussels, Belgium
Maria Rose Petrizzo, Milano, Italy (Chair Retaceous Subcommission)
Alicia Llorente, Bonn, Germany (Secretary Ordovician Subcommission)

Organization Co-Chair

The Organizing Committee is composed of members of the ICRP5ni. Lille research unit E51 R L1\$L >. of Paleof and o, the French geological society [Voci9t9 G9ologi0ue de FranceV<](#)

Thomas A. van der Zand, Zaragoza, Spain (Chair)
Catherine Sniezko, Basten-Lausen, Laude-Loire (Secretary of Lille)
Colin B. Burchfiel (French Geological Society)

[Congress email address](#) <strat2023@univ-lille1.fr>

Postal address: (ICR) 2023, 51 R L1\$L, 5ni. ersit9 de Lille C 'ciences et)echnologies, 4Xt +ent ' I C &it9 'cient@Oue, \$: -illeneu. e d/Asc0, France



=====